

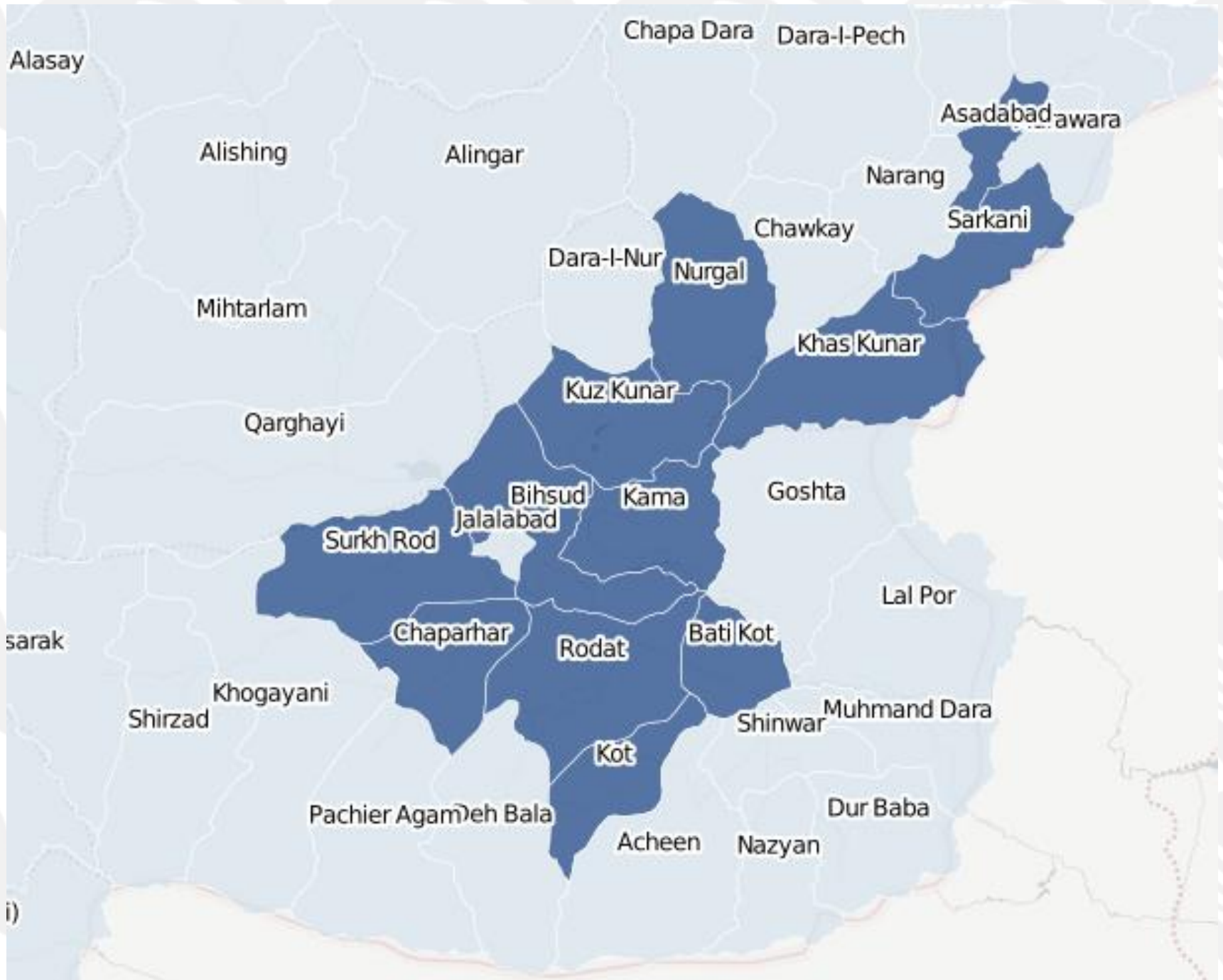


EVERYDAY PEACE INDICATORS

Dr. Pamina Firchow
Assistant Professor
School for Conflict
Analysis and Resolution
George Mason University
pfirchow@gmu.edu

Belquis Ahmadi
Senior Program Officer
United States Institute
of Peace
bahmadi@usip.org

Zach Tilton
Doctoral Research Associate
Interdisciplinary PhD in
Evaluation Western
Michigan University
zachary.d.tilton@wmich.edu



i)

Difficult to Define Concepts

Reconciliation

Governance

Peace

Justice

Violent Extremism

How are we usually guided?

- Gather Panel of Experts
 - Project/program managers
 - Scholars
 - Technical experts
 - High level officials
- Define a concept
- Generalize a concept to gain maximum impact
- Identify Indicators
- Collect Data

Why can this be problematic?

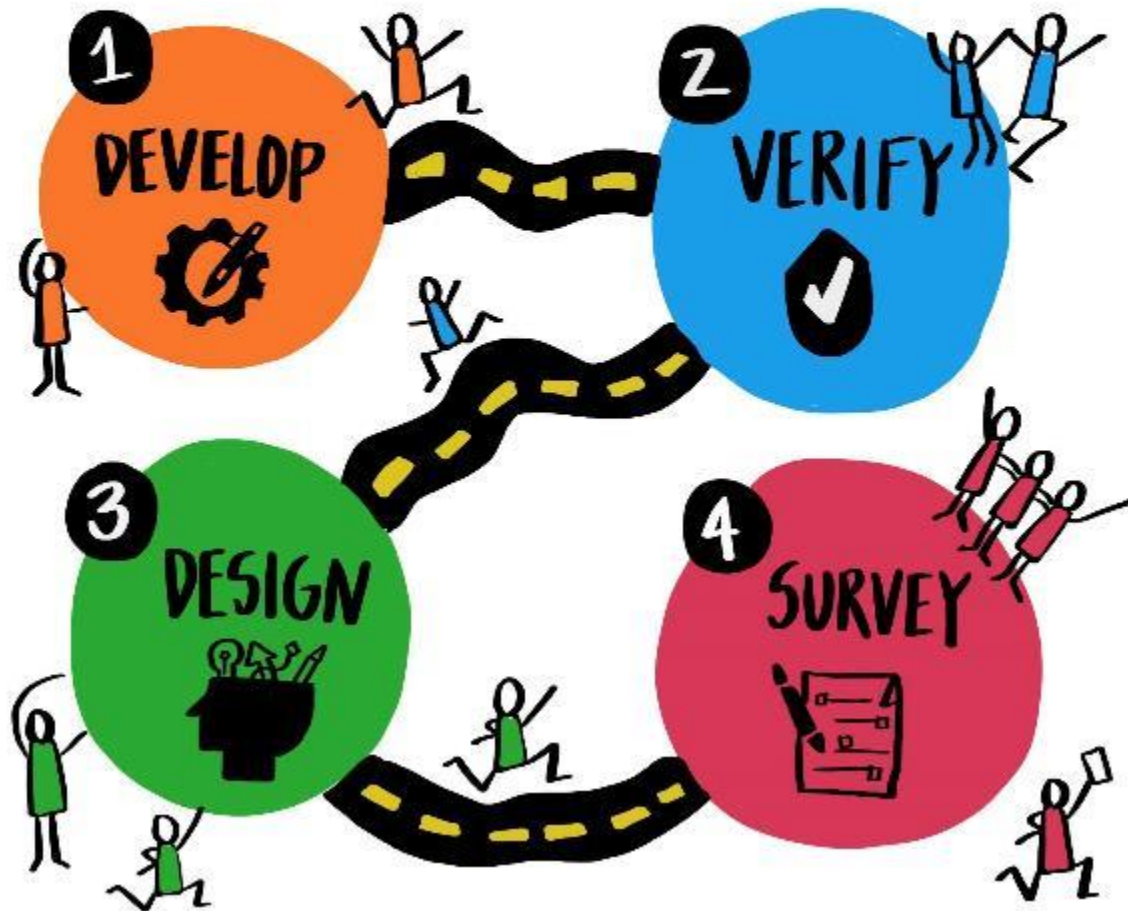
Outsiders define what a particular concept means to a specific group with a unique lived experience

Concepts can be very context and culture specific

Indicators are often in a vernacular that is foreign to the context they should be measuring or measure priorities of donors or implementers

Communities are best placed to identify their own indicators of difficult to measure concepts in order to ensure measurement validity

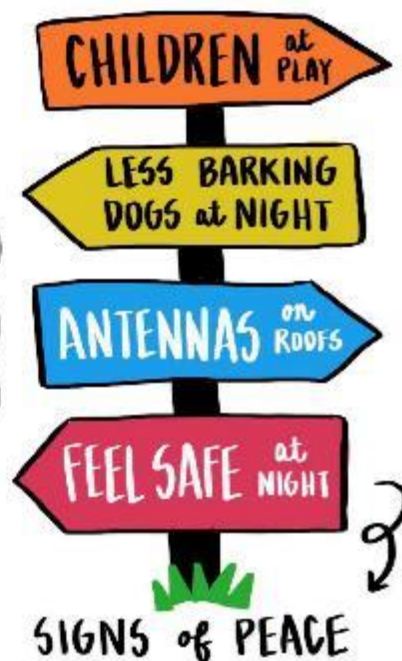
The PROCESS INVOLVES **FOUR** KEY STEPS





WE START BY ASKING
COMMUNITY MEMBERS
TO IDENTIFY THEIR OWN
→ MEASURES of PEACE ←

WHAT **SIGNS**
DO YOU LOOK FOR
IN YOUR **DAILY LIFE** 
to DETERMINE WHETHER
YOU and YOUR COMMUNITY
are AT PEACE?



What are the villagers' indicators of violent extremism?



- Inaccessibility of mullahs to attend ANA funerals
- Dogs barking at nights
- Domestic abuse
- Vaccination campaigns depart
- The police are carrying weapons
- Not seeing (NGO) branded projects
- Strangers/people masking their faces present in the village

Women's indicators of peace & security

- Mobility
- Access to education
- Girls are allowed to play volleyball
- Music played in wedding ceremonies
- Seeing boys play sports



Men's indicators of peace & security

- Visibility of symbols (TV antenna)
- Seeing girls going to school
- Seeing female NGO workers in village
- seeing women on TV





RESEARCHERS and LOCAL PARTNERS

CONDUCT FOCUS GROUP SESSIONS and GATHER

INDICATORS from COMMUNITIES that are ALREADY BEING USED

BY COMMUNITIES TO MEASURE their own PEACEFULNESS.



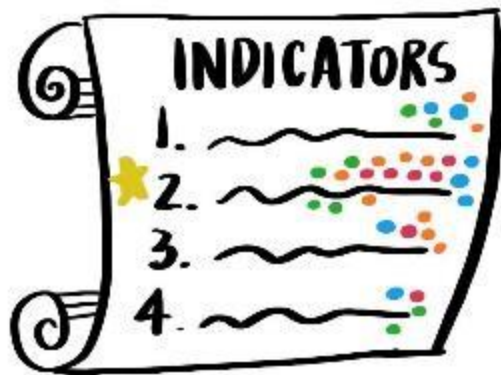
focus group #1



focus group #2



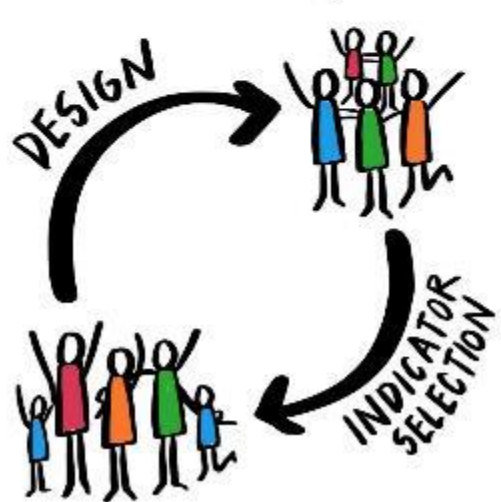
PARTICIPANTS GO THROUGH *and* REFINE the LIST of INDICATORS & HAVE the **ENTIRE** **COMMUNITY VOTE** *to* IDENTIFY the MOST REPRESENTATIVE INDICATORS for the COMMUNITY.



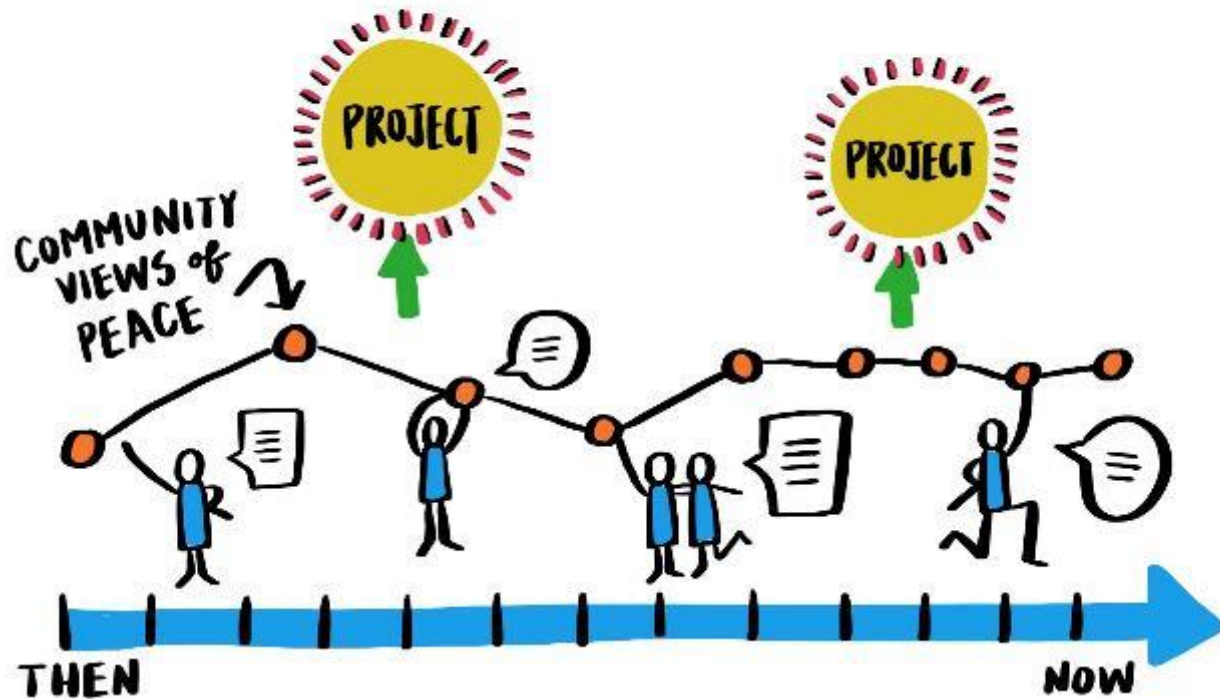


TEAMS USE
EVERYDAY INDICATORS
to "DESIGN PROJECTS"

THAT MEET *the* NEEDS
of *the* COMMUNITY.

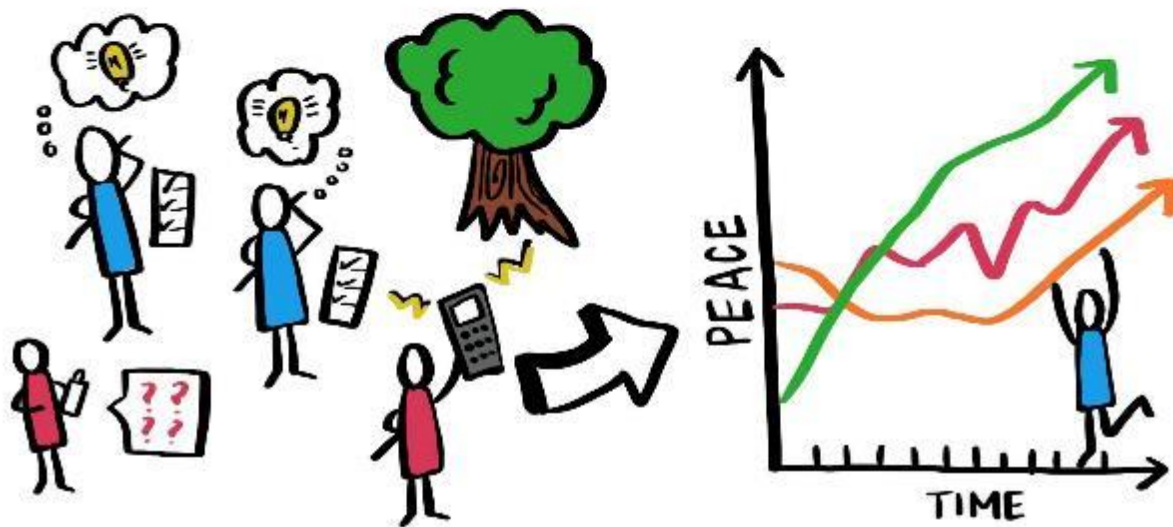


EPI IS HELPFUL in the **DESIGN** AND **PLANNING** of PROGRAMS. BY ANALYZING the EVERYDAY INDICATORS, YOU CAN LEARN A LOT ABOUT WHAT KINDS of PROJECTS COMMUNITIES NEED.





FIELDWORKERS
SURVEY *the* **COMMUNITY**
with a **REFINED LIST** of
INDICATORS; **SURVEYS**
are **REPEATED SEVERAL**
TIMES *to* **MEASURE CHANGE.**

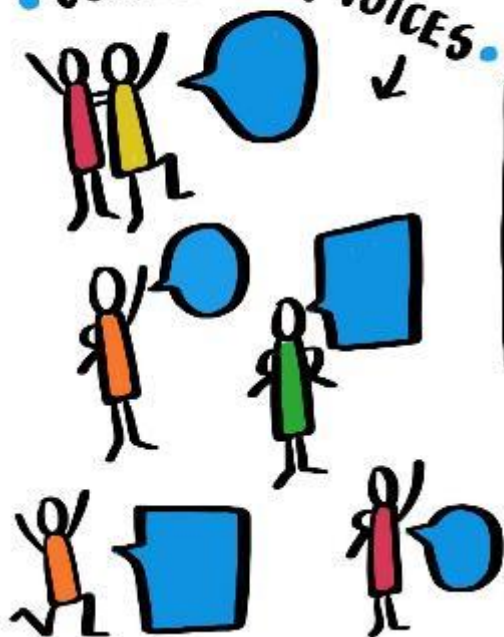


Evolution of Everyday Evaluation



the EPI METHODOLOGY CAPTURES
LOCAL VOICES WHILE MEETING the
DEMANDS of **RIGOR** EXPECTED by DONORS
and the PEACEBUILDING COMMUNITY.

• COMMUNITY VOICES.



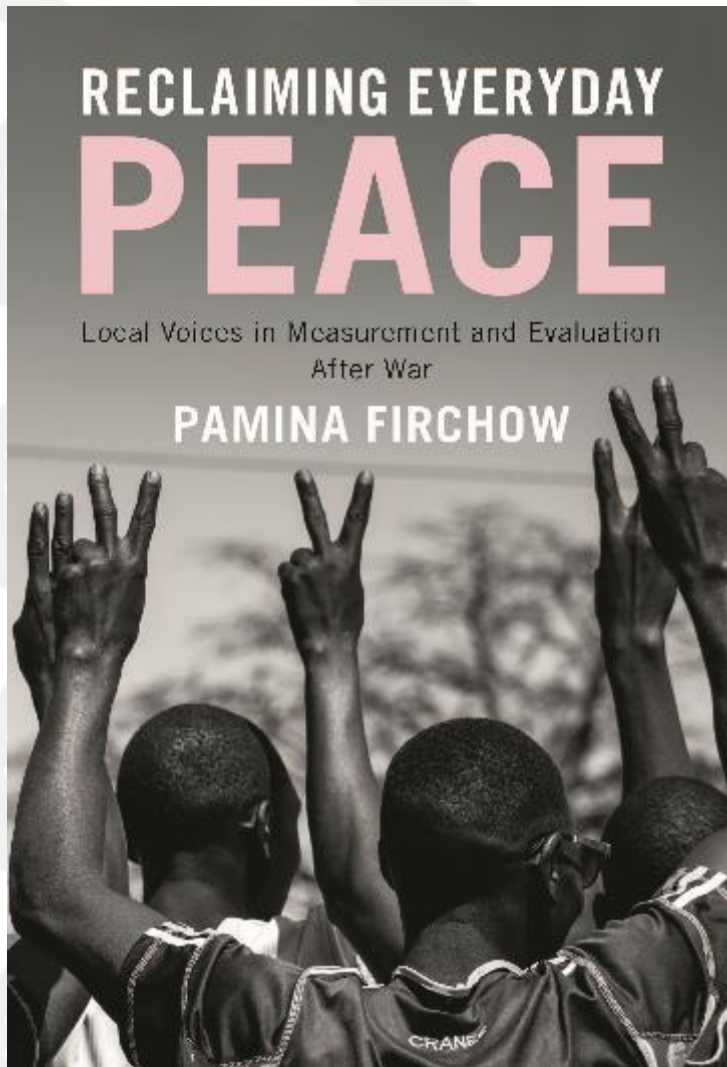
BUT
WHAT
ABOUT
RIGOR?

• DONORS and
PEACEBUILDERS.

EPI ENSURES:

- 1 INTERNAL VALIDITY
- 2 PRECISION
- 3 RELIABILITY
- 4 EXTERNAL VALIDITY

and many other
things



**Reclaiming
Everyday Peace:
Local Voices in
Measurement and
Evaluation After
War**

Cambridge University
Press, 2018

Perceptual and Inferential Evaluation

What ways can everyday
perceptual evaluation
enhance your approach to
inferential evaluation?



EVERYDAY PEACE INDICATORS

Dr. Pamina Firchow

Assistant Professor
School for Conflict

Analysis and Resolution

George Mason University

pfirchow@gmu.edu

Belquis Ahmadi

Senior Program
Officer

United States

Institute of Peace

bahmadi@usip.org

Zach Tilton

Doctoral Research Associate

Interdisciplinary PhD in

Evaluation Western

Michigan University

zachary.d.tilton@wmich.edu

More information at everydaypeaceindicators.org